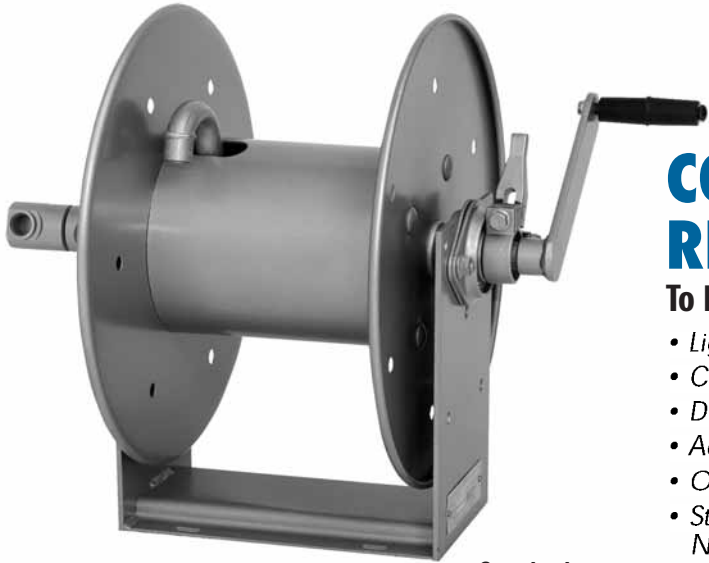


1000

COMPACT MANUAL REWIND REELS

To handle single 1/4" or 3/8" I.D. hose.



Standard Configuration Shown

- Lightweight
- Compact
- Direct crank rewind permanently attached.
- Adjustable cam lock brake standard.
- Optional pin lock available.
- Standard inlet 90° ball bearing swivel joint 1/2" female NPT threads.
- Standard outlet 3/8" female NPT threads.
- Pressures to 3000 psi (207 bar).
- Temperatures from +20° F to +400° F (-7° C to +204° C).
- Consult factory for other pressures & temps.

For:

- Pressure Washing
- Washdown
- Spray Operations
- Air

Parts Drawing – ISO 165

Model Number	Hose Capacity of Reel			Approx. Weight			Reel Dimensions***			
	I.D. (in) I.D. (mm)	1/4" 6	3/8" 10	NET	UPS/ FedEx SHIP Wt.	Freight SHIP Wt.	A	B	F	X
1014-14-16		100 31	75 23	23 10	42* 19	58 26	8.12 206	6 152	19 483	4 102
1016-14-16		150 46	100 31	24 11	42* 19	59 27	10.12 257	8 203	21 533	6 152
1020-14-16		250 76	175 53	25 11	42* 19	60 27	14.12 359	12 305	25 635	10 254

Notes:

1. Specifications subject to change.
2. Other sizes, from standard components, available on request.
3. **Finish:** refer to Page 4.

4. Be sure to check dimensions and weights prior to ordering.

NOTICE: A Flexible Connector must be used between the inlet pipe and the inlet swivel joint.

* Dimensional weight may apply when shipped as a parcel package (via FedEx or UPS Ground).

*** x,y indicate mounting holes. See page 2

