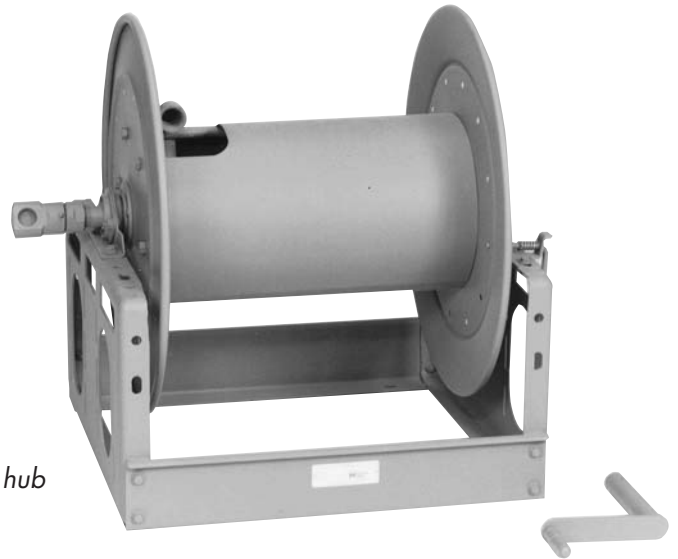


3000

MANUAL REWIND REELS

To handle 3/4" or 1" I.D. hose.

- Economical manual rewind reels for long lengths of hose.
- Choose disc rewind or removable direct crank rewind.
- Supplied with spring-actuated pin lock.
- Standard inlet 90° ball bearing swivel joint 1" female NPT threads.
- Standard outlet 1" female NPT thread.
- Optional bronze or aluminum swivel joint and stainless steel hub assembly and riser, are available
- Optional Rollers may be purchased.
- Operate to 1000 psi (69 bar)
- Temperatures from -60° F to +250° F (-51° C to +121° C).
- Consult factory for other pressures & temps.



Shown with Optional Crank Handle

For:

- Fuel Dispensing (Consult Factory)
- Spray Operations
- Fire Protection

Model Number	Hose Capacity of Reel feet m.				Approx. Weight Crank Rewind lb. kg.		Reel Dimensions*** inches mm.			
	Round Hose		Collapsible Hose	NET	SHIP	A	B	F	X	
	I.D. (in) I.D. (mm)	3/4" 19	1" 25							1" 25
	O.D. (in) O.D. (mm)	1-9/32" 33	1-9/16" 40	1/2"x1-3/4" 13 x 44						
3016-25-26		100 30	50 15	200 61	85 39	120 54	13 330	7.5 191	23.75 603	7.75 197
3020-25-26		150 46	100 30	300 91	94 43	129 59	17 432	11.5 292	27.75 705	9 229
3024-25-26		250 76	150 46	400 122	103 47	138 63	21 533	15.5 394	31.75 806	13 330
3028-25-26		300 91	200 61	550 168	113 51	155 70	25.5 648	20 508	36.25 921	17.5 445

Notes:

1. Specifications subject to change.
2. Upon request, reels can be supplied with drum lengths other than shown and with disc sizes in other diameters.
3. **Power rewind NOT available on these models.**
4. Dimension "F" is the overall length of standard model reels. Crank rewind models, 3-1/2" clearance required to remove crank.
5. Subtract 5" from 'F' dimension for disc rewind models.
6. For a detailed parts breakdown drawing, request ISO 113.
7. **Finish:** Call factory for offshore/marine finish, available at extra cost. Refer to Page 4.
8. **Be sure to check dimensions and weights prior to ordering.**

NOTICE: A Flexible Connector must be used between the inlet pipe and the inlet swivel joint.

*** x,y indicate mounting holes. See page 2

