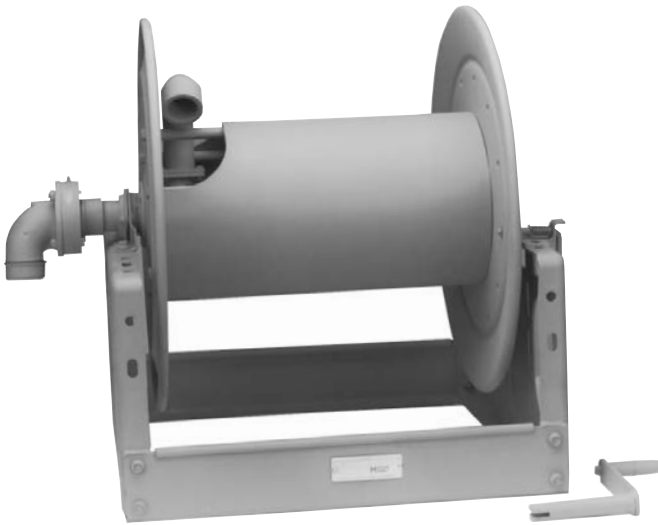


3500

MANUAL REWIND REELS

To handle 1" through 1-3/4" I.D. hose.



Shown with
Optional Crank
Handle

For:

• Fuel Dispensing
(Consult Factory)

• Bulk Transfer
• Fire Protection

- Economical manual rewind reels for long lengths of hose.
- Choose disc rewind or removable direct crank rewind.
- Supplied with spring-actuated pin lock.
- Standard inlet 90° swivel joint 1-1/2" female NPT threads and 2" victaulic groove.
- Standard outlet flanged riser with 1-1/2" female NPT threads.
- Optional bronze or aluminum swivel joint and stainless steel hub assembly and riser, are available
- Optional Rollers may be purchased.
- Pressures to 600 psi (41 bar)
- Temperatures from -40° F to +175° F (-40° C to +79° C).
- Consult factory for other pressures & temps.

Model Number	Hose Capacity of Reel feet m.				Approx. Weight Crank Rewind lb. kg.		Reel Dimensions*** inches mm.							
	Round Hose		Collapsible Hose		NET	SHIP	A	B	E	F	G	H	X	
	I.D. (in) I.D. (mm)	1" / 25	1-1/2" / 38	1-1/2" / 38										1-3/4" / 44
	O.D. (in) O.D. (mm)	1-9/16" / 40	2-1/16" / 52	3/4"x3" / 19 x 76	7/8"x3-1/4" / 22 x 83									
3516-25-26		50 / 15	- / -	50 / 15	50 / 15	95 / 43	130 / 59	13 / 330	7.5 / 191	24.75 / 629	26 / 660	27.88 / 708	15.5 / 394	7.75 / 197
3520-25-26		100 / 30	50 / 15	100 / 30	75 / 23	104 / 47	139 / 63	17 / 432	11.5 / 292	24.75 / 629	30 / 762	27.88 / 708	15.5 / 394	9 / 229
3524-25-26		150 / 46	75 / 23	150 / 46	100 / 30	113 / 51	157 / 71	21 / 533	15.5 / 394	24.75 / 629	34 / 864	27.88 / 708	15.5 / 394	13 / 330
3528-25-26		200 / 61	100 / 30	200 / 61	150 / 46	123 / 56	173 / 78	25.5 / 648	20 / 508	24.75 / 629	38.5 / 978	27.88 / 708	15.5 / 394	17.5 / 445
3524-30-31		200 / 61	100 / 30	250 / 76	150 / 46	124 / 56	174 / 79	21 / 533	15.5 / 394	28.75 / 730	34 / 864	29.88 / 759	15.5 / 394	13 / 330
3528-30-31		250 / 76	150 / 46	300 / 91	250 / 76	134 / 61	184 / 83	25.5 / 648	20 / 508	28.75 / 730	38.5 / 978	29.88 / 759	15.5 / 394	17.5 / 445
3534-30-31		350 / 107	200 / 61	450 / 137	350 / 107	147 / 67	197 / 89	31.5 / 800	26 / 660	28.75 / 730	44.5 / 1130	29.88 / 759	15.5 / 394	23.5 / 597
3530-33-34		400 / 122	250 / 76	450 / 137	350 / 107	138 / 63	188 / 85	27.5 / 699	22 / 559	31.75 / 806	40.5 / 1029	32.38 / 822	16.5 / 419	19.5 / 495

Notes:

1. Specifications subject to change.
2. Upon request, reels can be supplied with drum lengths other than shown and with disc sizes in other diameters.
3. Power rewind NOT available on these models.
4. Dimension "F" is the overall length of standard model reels. Crank rewind models, 3-1/2" clearance required to remove crank.
5. Subtract 5" from 'F' dimension for disc rewind models.
6. For a detailed parts breakdown drawing, request ISO 111.
7. **Finish:** Call factory for offshore/marine finish, available at extra cost. Refer to Page 4.
8. Be sure to check dimensions and weights prior to ordering.

NOTICE: A Flexible Connector must be used between the inlet pipe and the inlet swivel joint.

*** x,y indicate mounting holes. See page 2

