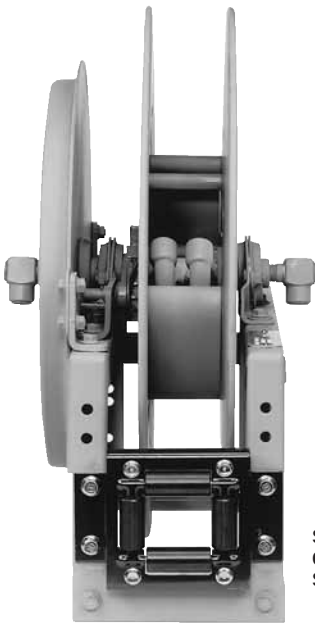


# 600

## SPRING REWIND DUAL HOSE REELS

To handle dual 1/4" through 3/4" I.D. hose.

- Rollformed channel frame for heavy duty applications.
- Non sparking ratchet assembly.
- Declutching arbor to prevent damage from reverse winding.
- Standard inlets 90° balanced pressure swivel joints 1/2" female NPT threads. (1" inlet available).
- Standard outlets 1/2" female NPT threads. (3/4" outlet available).
- Pressures to 3000 psi (207 bar)
- Temperatures from -60° F to +250° F (-51°C to +121°C).
- Consult factory for other pressures & temps.
- 4-way roller assembly.
- Constant Tension is available – consult factory.
- Reels for use with oxygen/acetylene.  
See Series N400 Hannay Reels Welding Catalog H-0408-W.



Standard Configuration Shown

For:

- Hydraulics
- Air/Water
- Spray Painting

### Parts Drawing – ISO 8

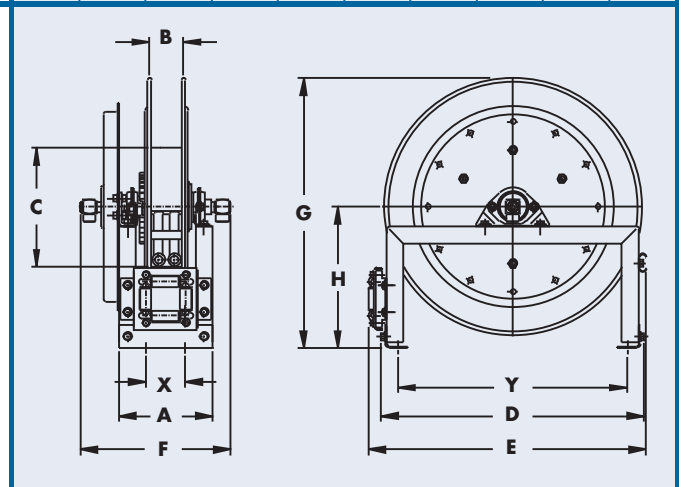
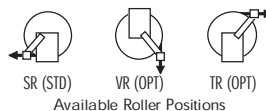
Model Number	Hose Capacity of Reel					Approx. Weight		Standard Roller Assy	Reel Dimensions***									
	feet					NET	SHIP		inches									
	m.								mm.									
I.D. (in) I.D. (mm)	1/4" 6	3/8" 10	1/2" 13	3/4" 19				A	B	C	D	E	F	G	H	X	Y	
615-23-24-10.5B	2/65 2/20	2/60 2/18	2/30 2/9	– –	53 24	88 40	R203	8.25 210	3 76	10.5 267	23.25 591	24.38 619	13 330	23.88 607	12.5 318	3.5 89	20 508	
617-25-26-15.5B	2/75 2/23	2/75 2/23	2/50 2/15	– –	93 42	128 58	R205	10.25 260	5 127	15.5 394	25 635	26.12 663	15 381	25.88 657	13 343	5.5 140	21.75 552	
617-25-26-15.5A	2/100 2/31	2/85 2/26	– –	– –	120 54	155 70	R205	10.25 260	5 127	15.5 394	25 635	26.12 663	15.75 400	25.88 657	13.5 343	5.5 140	21.75 552	
† 618-30-31-15.5A	– –	– –	2/100 2/31	2/50 2/15	130 59	165 75	R206	11.25 286	6 152	15.5 394	28.5 724	29.62 752	16.75 425	31.38 797	16.75 425	6.5 165	25.25 641	

**Notes:** A hose stop is necessary on hose to keep spring from unwinding.

1. Specifications subject to change.
2. Reel models and capacities shown are for standard drag applications; for vertical lift applications consult factory.
3. Other sizes, from standard components, available on request.
4. **Finish:** refer to Page 4.
5. **Be sure to check dimensions and weights prior to ordering.**

**NOTICE:** A Flexible Connector must be used between the inlet pipe and the inlet swivel joint.

\*\*\* x,y indicate mounting holes. See page 2  
NPT threads, standard outlets are 1/2" female NPT threads.  
† Must specify if 1" joints and 3/4" outlet risers are required.



For hydraulic tool circuit applications full flow swivels w/viton seals are recommended (add 2.25 to "F" dim in chart)