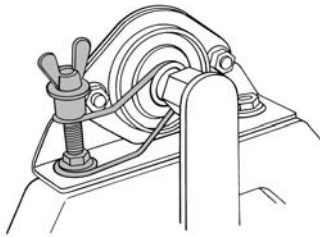


Brakes and Locks

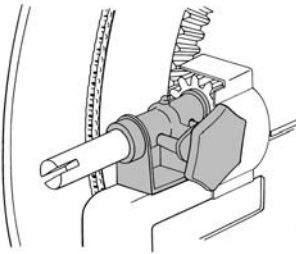


Drag Brake

Adjustable spring tension brake applies drag pressure to axle on some direct crank rewind reels.

To order, specify part number (see Price List H-0415-OAL).

For factory installation, specify Drag Brake with reel order.



Pinion Brake

Adjustable spring tension applies braking pressure to pinion shaft on reels equipped with ring gear rewind mechanism.

To order, specify part number (see Price List H-0415-OAL).

For factory installation, specify Pinion Brake with reel order.



Comet Brake

Adjustable steel strap lined with brake pad material applies drag pressure to reel axle to control payout speed of the reel.

To order, specify part number (see Price List H-0415-OAL).

For factory installation, specify Comet Brake with reel order.

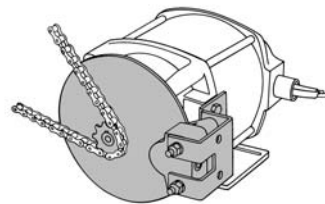


Cam Lock Drag Brake

Molded plastic drag brake with cam lock lever designed for 1/2" manual reels. Corrosion proof and does not harm the hub. Infinitely adjustable for the desired drag tension to prevent cable or hose overrun. Instantly releases with the flip of a lever for drag free rewind.

To order, specify part number (see Price List H-0415-OAL).

For factory installation, specify Cam Lock Drag Brake with reel order.

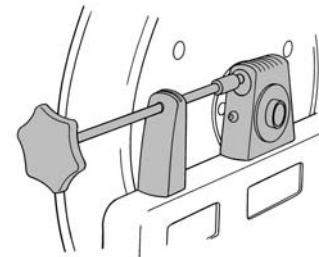


Caliper Brake

Clamps a disc on the motor shaft for positive locking of reels with power rewind. Can be operated manually, hydraulically or by compressed air.

To order, specify part number (see Price List H-0415-OAL).

For factory installation, specify Caliper Brake with reel order.



EH-820 Bearing/Brake Assembly

This assembly provides an alternate method of braking control on certain model reels. Assembly is installed in the back bearing position. Brake applies pressure to the reel axle to slow or lock the reel.

Can be factory installed, when specified with reel order, or supplied in kit form for field installation.

To order, specify part number (see Price List H-0415-OAL.)

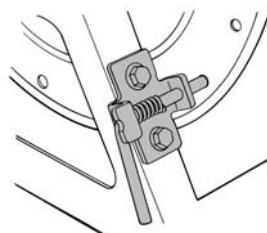
For factory installation, specify Bearing Brake/Assembly with reel order.

PL-1 Pin Lock

A positive, spring-actuated pin lock to prevent free-wheeling or recoil from pressure surges. May be factory-installed when specified on your reel order.

To order, specify part number (see Price List H-0415-OAL).

For factory installation, specify Pin Lock with reel order.



ACCESSORIES

RCB Kits (Relay/Circuit Breaker)

Reel-Mounted Relay/Circuit Breaker Kits

Factory-installed, significant installation labor savings, no longer necessary to fabricate and mount a bracket.



RCB kits are designed to work with several different reel models

- 1600 Series
- 1500 Series
- 4000 Series
- 2000 Series
- 1800 Series

If you already have a reel and would like to install an RCB kit yourself, call Hannay Reels or your local dealer for standalone pricing and part numbers.

Variable Speed Controls "MD" Series



Model MD-1225S
(similar to MD-1240S, MD-1250S, and MD-2425S)



Model MD-1225SR



Model MD-70

Features on all models:

- Use pulse width modulation (PWM) control circuit to lower speed of reel by factor of five or more without sacrificing significant motor torque and without motor heat up
- Variable control knob means speed can be adjusted to any desired setting
- Service temperature range of -40° to +158° F (-40° to +70° C)
- Heavy 10 gauge wire provided (4 ft.) to make connections
- Dimensions: 4.5" H x 3.5" W x 3.13" D

Features on Models MD-1225S, MD-1240S, MD-1250S, MD-2425S, and MD-1225SR:

- Contains all components needed to control reel rewind, including variable speed control, push-button switch, manual reset circuit breaker (25, 40, or 50 amp), relay, and 10 gauge wire.
- Can be used for either 12 volt or 24 volt DC applications (depending on model chosen)
- MD-1225SR provides all features of an MD-1225S, but adds motor reversibility (power in, power out)

Features on Model MD-70:

- Contains variable speed control only.
- Works on all 12 or 24 volt DC Hannay motors (up to 70 amps)

NOTE: None of the "MD" series speed controls are explosion proof.

Operating Switches for Electric Rewind Reels



90030

90030 sealed push-button momentary contact switch with rubber cap for 12 or 24 volt **D.C.** service.



P15A-00130

P15A-00130 Universal mounting bracket for EPS-1 switch.



EPS-1

EPS-1 explosion-proof cable momentary contact switch for remote control or for permanent mounting in the most convenient location. Supplied with 6 ft. of 3-wire cable, self-sealing fitting and terminals. Must be used with solenoid.



P15A-00170

P15A-00170 Mounting bracket for use with Guidemaster.



PB-1

PB-1 switch non-explosion-proof, 115v momentary contact switch.



**EXPB-2A
EXPBC-2B**

EXPB-2A explosion-proof, push-button momentary contact switch for **D.C.** service only. Must be used with solenoid.

EXPBC-2B For use with **A.C.** motors.

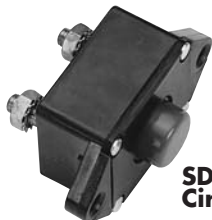
To Order: Specify Part Number.

Circuit Breakers

Must be used with all D.C. electric rewind motors.

SDLM Manual Reset. Push-button must be pressed firmly to reset. Several amperage ratings are available to suit specific application.

CB-2 Mounting bracket for SDLM Breaker.



**SDLM
Circuit Breaker**



CB-2 Bracket



25 Amp Circuit Breaker

To Order: Specify SDLM and give Model Number of reel motor. Specify CB-2 bracket, if required.

ACCESSORIES

Rewind Motors



**Base mount E.P.
Electric Motor**



**Face mount E.P.
Electric Motor**



**Face mount Non-E.P.
DC Motor**
(Shown with optional
mounting plate part no.
9923.0008)

Hydraulic Motors are reversible type. No other hydraulic components are furnished with the reel. A 4-way, three position control valve with motor spool is recommended but is **not** supplied.



Compressed Air Motors are supplied with a fingertip control valve with integral backpressure relief, and with flexible air line from control valve to rewind motor. We recommend using a lubricator and filter with air rewind motors, not supplied.



Electric Motors are reversible type for A.C. or D.C. operation. **Circuit breaker must be used with all D.C. electric motors.**

Note: All accessories for the above motors are available, but must be ordered separately.

Note: Standard motor voltages available. 12v. and 24v. D.C., 115v. A.C., 230v. A.C. single phase and 3-phase motors available on special order.

Rewind Assemblies for Gear-Driven Crank Rewind Reels

These assemblies are used to change the pinion shaft position on gear-drive crank rewind reels to meet space restrictions or for greater operator convenience. Units can be factory-installed, when specified with reel order, or supplied in kit form for field installation.

Assemblies are complete with drag-brake assembly, pinion, gear guard, brake handle and fasteners. Fits standard mounting holes on reel frame.

To Order: Specify Rewind Position for parts order or factory installation.



**Horizontal
rewind unit**



30° rewind unit



Vertical rewind unit

Clutch and Reduction Assemblies



Manual Clutch and Reduction Unit.

Hannay reduction units are used to increase the torque (by 50 to 500 percent, depending on the ratio chosen) and decrease the rewind speed on power-driven reels. The clutch allows the motor and reduction unit to be disengaged from the reel, eliminating drag in the unwinding mode. The manual clutch is disengaged by means of a user-operated pull rod. The electric clutch requires no user intervention. It automatically engages when the motor is running, and disengages when the motor stops.



Electric Clutch and Reduction Unit.

Hannay reduction units and clutches are available as a kit for field installations or can be factory-installed when specified with the reel order. Reduction unit kits include reduction unit, length of chain, connector links, and fasteners. Clutch/reduction kits include the clutch & reduction unit, length of chain, connector links, and fasteners.

YOU MUST SPECIFY MODEL OF REEL THE ASSEMBLY IS TO BE INSTALLED ON.

Available ratios.

REDUCTION UNIT ONLY	CLUTCH & REDUCTION UNIT
12/18	12/40
12/25	12/48
12/36	12/60
12/48	
12/60	

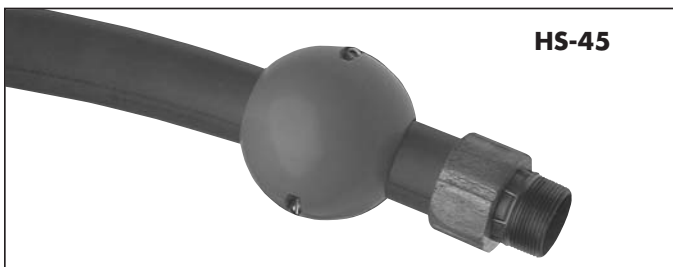
Hose and Cable Stops

Recommended with spring rewind reels and 4-way roller assemblies.

Each stop is easily assembled with the fasteners provided, without any special tools. HS-3 and HS-45 are two-piece molded plastic spheres, custom drilled to the size you specify.



HS-3



HS-45

To Order: For HS-3 or HS-45, specify Part Number and O.D. of hose or cable. (Indicate single or dual hose.)

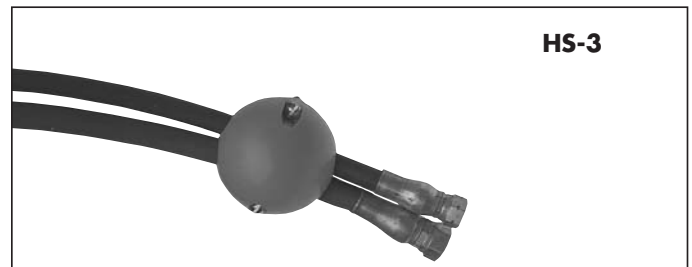
PART NO.	DIMENSIONS	MAX. HOLE SIZE SINGLE HOSE/CABLE
HS-3	3" O.D.	1-7/8" dia.
HS-45	4-1/2" O.D.	2-3/4" dia.

Single Hose

Note: holes are drilled 1/16" **smaller** than your specified O.D.

Dual Hoses

Note: holes are drilled 1/32" **smaller** than your specified O.D.



HS-3

Hose Assemblies

Various Hose Assemblies available for a wide variety of applications. See form H-0308-H.

ACCESSORIES

Roller Assemblies for Spring Rewind Reels



N200



R200



R300



EH-714



PW-2R Roller

These 4-way roller assemblies are for use on the reel, on cabinet door openings and for similar locations where sharp metal edges may cut or damage the hose/cable. 4-way design protects hose even when payout or rewind is at an angle.

The N200 and R200 roller assemblies have Delrin rollers mounted in stamped steel housings for flush panel mounting, reel mounting (R200) or right angle mounting (N200).

The R300 roller assemblies have stainless steel rollers, Delrin bearing inserts and zinc die-cast corner mounting blocks assembled on a steel mounting frame.

To Order: Specify Part Numbers N Models for N Series Reels, R Models for Channel Frame Reels

Note: A hose stop should be used with 4-way rollers to prevent damage to rollers and nozzles. See description on page 13.

PART NO.	OVERALL DIMENSIONS		ROLLER OPENING	
	INCHES	MM	INCHES	MM
R203	8.0 x 5.5	203.2 x 139.7	2.5 x 2.0	63.5 x 50.8
R204	9.0 x 5.5	228.6 x 139.7	3.5 x 2.0	88.9 x 50.8
R205	10.0 x 5.5	254.0 x 139.7	4.5 x 2.0	114.3 x 50.8
R206	11.0 x 5.5	279.4 x 139.7	5.5 x 2.0	139.7 x 50.8
N203	5.5 x 5.5	139.7 x 139.7	2.5 x 2.0	63.5 x 50.8
N204	6.5 x 5.5	165.1 x 139.7	3.5 x 2.0	88.9 x 50.8
N205	7.5 x 5.5	190.5 x 139.7	4.5 x 2.0	114.3 x 50.8
N206	8.5 x 5.5	215.9 x 139.7	5.5 x 2.0	139.7 x 50.8
R306	11.25 x 7.0	285.8 x 177.8	5.5 x 2.38	139.7 x 60.45
R308	13.25 x 7.0	336.6 x 177.8	7.5 x 2.38	190.5 x 60.45
R310	15.25 x 7.0	387.4 x 177.8	9.5 x 2.38	241.3 x 60.45
PW-2R	9.75 x 3.75	247.7 x 95.3	5.13 x 1.13	130.3 x 28.7
EH-714	9 x 5.625	228.6 x 142.9	2.5 x 2.5	63.5 x 63.5

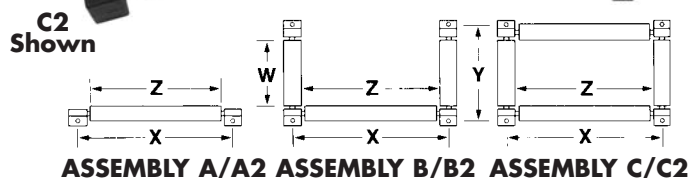
Utility Hose Rollers

Stainless steel rollers and cast alloy brackets for use on the reel, on cabinet door openings, truck platforms and similar locations where sharp edges may cut or damage hose/cable.

Specifications: 1-1/2" diameter stainless steel roller, stainless steel rod, Delrin bearings, alloy brackets and required fasteners.

To Order: Specify Assembly A, B, or C, and give distance between **each pair** of mounting holes (Dimensions X and Y) and length of each roller (Dimensions W and Z). W=Vert. Roller Length, Z=Horiz. Roller Length.

Also available factory-installed on the reel.



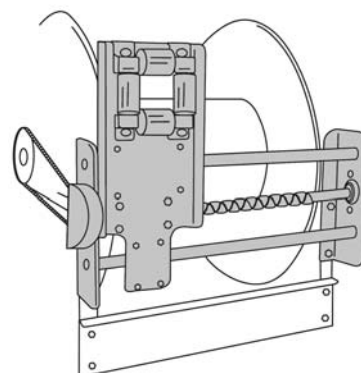
Levelwind

A chain and sprocket-driven levelwind device to evenly wrap hose/cable on a reel. This device is driven from the main axle of the reel which automatically reverses at the extremes of travel.

Designed for custom/special reel applications when required.

Available at extra cost and must be specified—consult factory for further information, pricing and delivery.

Note: To be used for straight line pulls only.

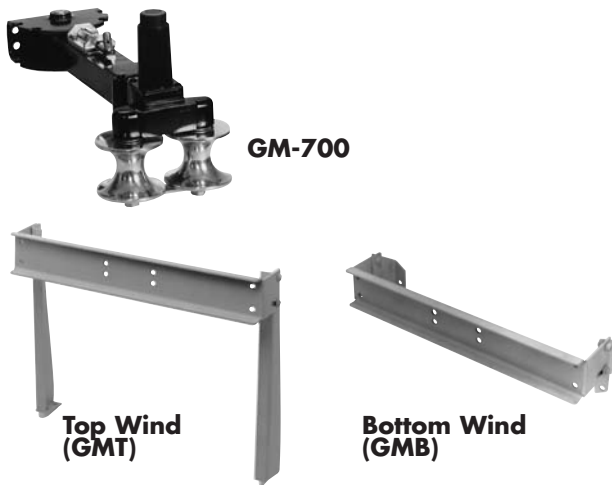


Shown without standard chain guard.

GM-700 Guidemaster

Multiposition hose guide with explosion-proof remote rewind control.

Both models help unwind and rewind hose faster, easier and with less damage to the hose. Five positive locking positions let the operator pull the hose out and away from sharp corners of cabinet or deck. An explosion-proof push-button switch in the Guidemaster handle lets the operator control the rewind motor as he guides the hose on the reel in neat, uniform coils.



Construction: Cast aluminum alloy housing, stamped steel pivot plate. Polished aluminum alloy rollers turn on ball bearings. Stainless steel spring, components and fasteners are used in the pivot release mechanism. Six feet of wire is supplied to connect operating switch to the solenoid. Switch has Class 1 (Groups A B C D) and NEMA 4X ratings.

The Guidemaster can be ordered in three ways.

1. Guidemaster only, supplied with four mounting bolts and ready to be attached to your mounting brackets.
2. Guidemaster and brackets, includes steel mounting bracket, beveled spacers and fasteners designed for your reel. Ready to install. Specify top or bottom wind.
3. Guidemaster mounting brackets factory installed. Specify top or bottom wind.

To Order: For factory installation of mounting bracket, Guidemaster should be ordered when you order the reel. When purchasing Guidemaster for installation on your present reel, give the complete model number and serial number of your reel and the complete part number of the Guidemaster.

Circuit breaker must be used with all D.C. electric motors.

Note: This guidemaster can be used with reels up to a maximum drum width or B dimension of 22". Operates with up to a 2.16" O.D. hose.

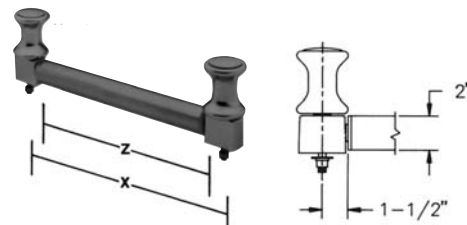
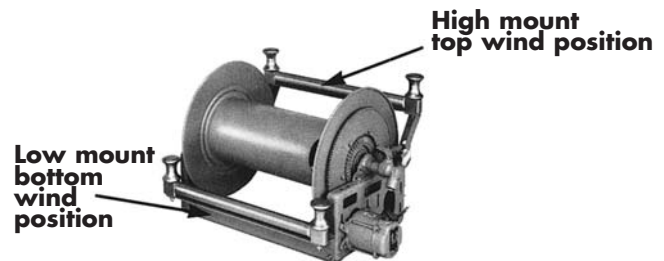
FH-3 Roller and Spool Assembly

Not recommended for hoses larger than 1-1/2" I.D.

Speeds handling and reduces hose wear. Buffed stainless steel rollers resist corrosion, pitting and abrasion. Polished, chrome-plated spools and blocks add lasting beauty to your equipment. Delrin bearing surfaces assure quiet operation and minimum wear.

Assembly can be factory-installed, when specified, or ordered for field installation on reels or other equipment.

To Order: For factory installation, specify FH-3 Assembly and indicate position on reel. As an accessory, specify FH-3 Assembly and give length of roller (Dimension Z) and distance between mounting holes (Dimension X). Mounting brackets are available.



HOW TO ORDER ACCESORIES

Hannay Reels Accessories Order Form.

To order any of the accessories shown in this catalog, please provide the following information to your Hannay Reel Dealer.

1. Who are the accessories for?

Company _____	Street Address _____
Division _____	City _____ State _____ Zip _____ Country _____
Contact _____	(_____) / _____ / _____ Telephone _____ Fax _____ Date _____

2. What accessories are needed?

Item Name _____	Item Name _____
Part # _____	Part # _____
Page # _____	Page # _____
Reel model _____	Reel model _____
Reel serial # _____	Reel serial # _____
Item Name _____	Item Name _____
Part # _____	Part # _____
Page # _____	Page # _____
Reel model _____	Reel model _____
Reel serial # _____	Reel serial # _____
Item Name _____	Item Name _____
Part # _____	Part # _____
Page # _____	Page # _____
Reel model _____	Reel model _____
Reel serial # _____	Reel serial # _____

3. What are the specifications?

Please note: Provide any specifications called for in accessory description.

_____	_____
_____	_____
_____	_____
_____	_____

HANNAY REEL POLICIES

Our Guarantee

Equipment **manufactured by** Hannay Reels, Inc. is guaranteed for two years from date of shipment when installed according to our instructions, given proper care, and used for the purpose for which it is designed.

Equipment which proves to be defective upon our inspection will be replaced free of charge, including return freight to the customer. No allowance will be made for labor charges incurred in making exchanges, replacements or repairs. No material will be accepted for return without a return goods authorization.

Components (including swivel joints, motors and hose) which are manufactured by other vendors, will be subject to the warranty terms of their own manufacturers. Also excluded from the general guarantee are normal wear items (including seals, motor brushes, and paint finish).

NOTICE: A FLEXIBLE CONNECTOR MUST BE USED BETWEEN THE INLET PIPE AND THE INLET SWIVEL JOINT ON THE REEL OR THE WARRANTY WILL BE VOID.

We expressly disclaim any liability for damage or injuries resulting from the use, operation, service, maintenance or failure of equipment.

Every Hannay Reel is built to order and, therefore, reels are not normally returnable or subject to cancellation. Exceptions can be made to this rule at the sole discretion of Hannay Reels and will necessitate a restock fee of no less than 25% and often more depending on the degree of customization.

Service Policy

Equipment manufactured by Hannay Reels is warranted for a period of two years from date of shipment to the extent that we will repair or replace such equipment, F.O.B. Westerlo, N.Y., if it is defective, by reason of faulty material or workmanship, under normal use and service for the purpose for which it was designed. Our responsibility ceases upon delivery to any common carrier and we do not, unless previously instructed, insure shipments beyond point of delivery to such carrier.

We reserve the right to modify or alter materials, dimensions, design and construction, when necessary to improve the performance of the reel and/or accessories, or to meet delivery requirements.

Failure to use circuit breakers with any electric rewind motor will void warranty on motor.

Failure to use flexible connector with any live hose reel will void warranty on swivel joint.

Paint Notice

To meet the requirements and performance of vehicle and OEM apparatus paints we recommend our reels be painted with the same or equal paint as used on the specific apparatus the reel is being mounted on.

Hannay Reels will supply any model or custom reel or part with an automotive primer or rust preventative oil finish upon request, allowing application of final coating at your facility. Or at additional cost Hannay can prime/pre-paint all material before final assembly.

In today's regulatory environment this would be the most cost-effective way to meet your finishing standards.

Consult factory for other optional finishes.

Standard finish is oven cured enamel. High performance finishes for demanding and corrosive environments are available at an additional cost. Consult factory for specific requirements.

Return Goods Policy

All Hannay Reels are built to order. The parts and components are ordered or placed into production as soon as the order is written.

In order to keep the number of returned goods at a minimum, we ask you use the Hannay Reels Order Worksheet and /or Accessories Order Form when specifying reels with us. These forms can be found on pages 8 and 16 of this catalog.

Be sure to include any size and /or weight limitations for your installation.

In the event that an item does need to be returned for credit, repair or replacement, prior approval **must** be obtained from Hannay Reels, Inc. Upon your request, we will fax a Return Goods Authorization form. A signed copy of this form must accompany the material when returned to us.

All material must be returned prepaid, unless otherwise noted on our Return Goods Authorization. **No** return will be accepted that has been damaged due to improper return packaging, tampered with or altered from its original condition. **Equipment specially built to customer specifications and requirements is not subject to cancellation or returnable for credit under any conditions.**

Our restocking and handling fee is a **MINIMUM** of 25% for standard catalog reels and parts.

No material will be accepted for credit when returned without permission. No material will be accepted for credit after one year from date of purchase. Orders for equipment incorporating variations from catalog listed items are special and are not subject to return.

No allowance will be made for labor or mileage charges incurred in making exchanges, replacements, or repairs.