

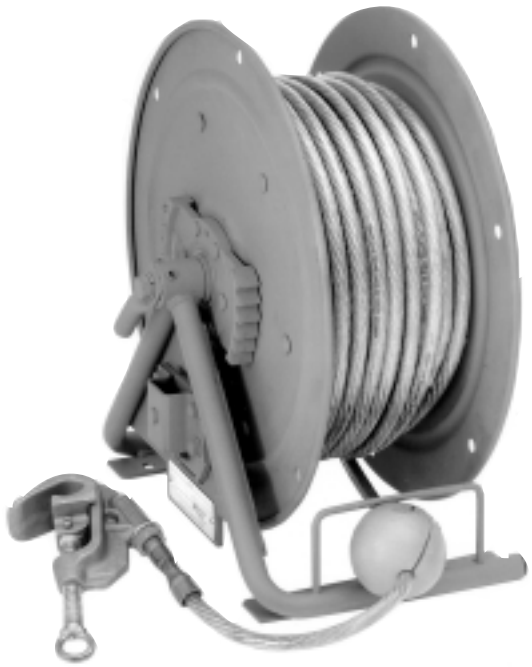
Hannay Series

Utility Grounding Reels

Hannay truck grounding reels are designed to provide a secure and efficient means for grounding vehicles and equipment when working on or near power lines. Available with spring or manual rewind, Hannay grounding

reels simplify vehicle grounding by providing easy cable pay-out from the vehicle to a suitable ground. When the job is complete, fast, convenient rewind gets you on your way.

- Heavy-duty steel construction stands up to field use.
- Independently tested to 15kA for 30 cycles.*
- Bolt-down design allows for easy removal and re-installation on new vehicles.
- Manual or Automatic Spring Rewind available.
- Helps meet OSHA requirements for vehicle grounding.**



Model SGCR 10-17-19
Spring Rewind
 Standard Configuration Shown
 with optional cable & clamp



Model GCR 10-17-19
Manual Rewind
 Standard Configuration Shown



- For use on:**
- Construction Vehicles
 - Utility Vehicles
 - Maintenance Vehicles
 - Rescue & Haz-Mat Vehicles

* The rating of 1/0 ground cable is 15kA for 30 cycles. The use of 2/0 and 4/0 cable is not recommended, since the fault duty rating of these cables exceeds that of the truck grounding reel. Refer to ASTM 855-90, standard specification for Temporary Grounding Systems, for more information.

** OSHA Subpart V, Section 1926.952 requires grounding of vehicles working near energized lines or equipment. Hannay grounding reels help meet this requirement and encourage crew compliance by providing a simple, efficient method of handling heavy grounding cable.

Model

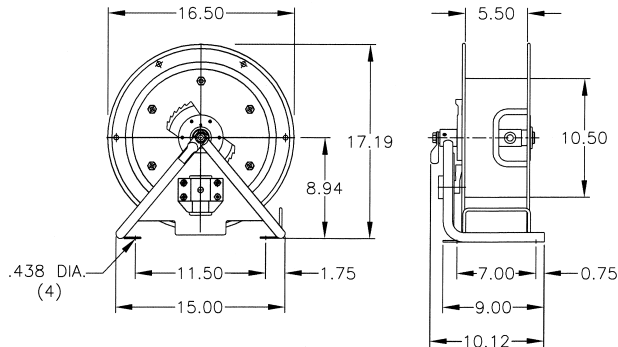
SGCR/GCR/GC

SGCR 10-17-19 Spring Rewind Grounding Reel

Model SGCR 10-17-19 features fast and convenient automatic spring rewind. A ratchet mechanism locks the reel when the cable is unwound and releases easily for rewinding. The built-in cable hoop guides the cable on and off the reel smoothly. An internal rotary device on the reel axle provides a sturdy connection for the cable. For a detailed parts breakdown drawing, request ISO 95.



Standard Configuration Shown with optional cable & clamp

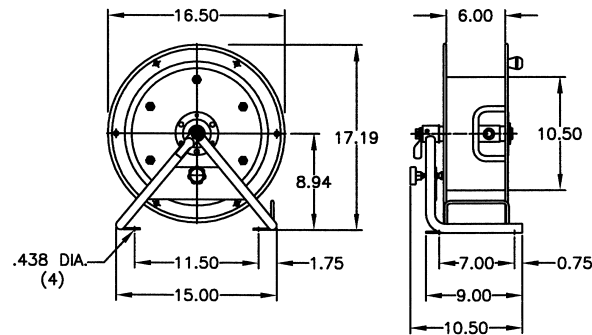


GCR 10-17-19 Manual Rewind Grounding Reel

Model GCR 10-17-19 grounding reel offers manual rewind with a hand crank permanently attached to the disc. An internal rotary device on the reel axle provides a sturdy connection for the cable.



Standard Configuration Shown



GC 10-17-19 Manual Storage Reel (Not Shown)

Model GC 10-17-19 grounding cable "STORAGE ONLY" reel offers manual rewind with a hand crank permanently attached to the disc.

Cable Capacities of Reel

Model Number	Gauge of Conductor		Approx. Weights	
	#2	1/0	lb/kg	
O.D. (in)	0.53	0.64	NET WT	SHIP WT
O.D.(mm)	13.5	16.2	(less cable)	(less cable)
SGCR 10-17-19	75	60	62	78
	22.9	18.3	28	35
GCR 10-17-19	150	85	30	36*
	45.7	25.9	14	16
GC 10-17-19	150	85	28	34*
	45.7	25.9	13	15

*Note: If shipping reel with cable, add 10 lbs for packaging, plus weight of cable.

Cable Weights: #2 gauge = .3 lb/ft
1/0 gauge = .5 lb/ft

To Order (Specify all items listed):

- Cable gauge, length, and O.D.
- Complete model number

Reels are UPS shippable.



553 State Route 143
Westerlo, NY 12193-0159
Telephone 518-797-3791
Toll Free 1-877-GO REELS (467-3357)
FAX 1-800-REELING (733-5464) USA
FAX 1-518-797-3259 (International)
Website: www.hannay.com
E-mail: reels@hannay.com

3M HP 11-01

Form H-9705-GR
Rev. 3