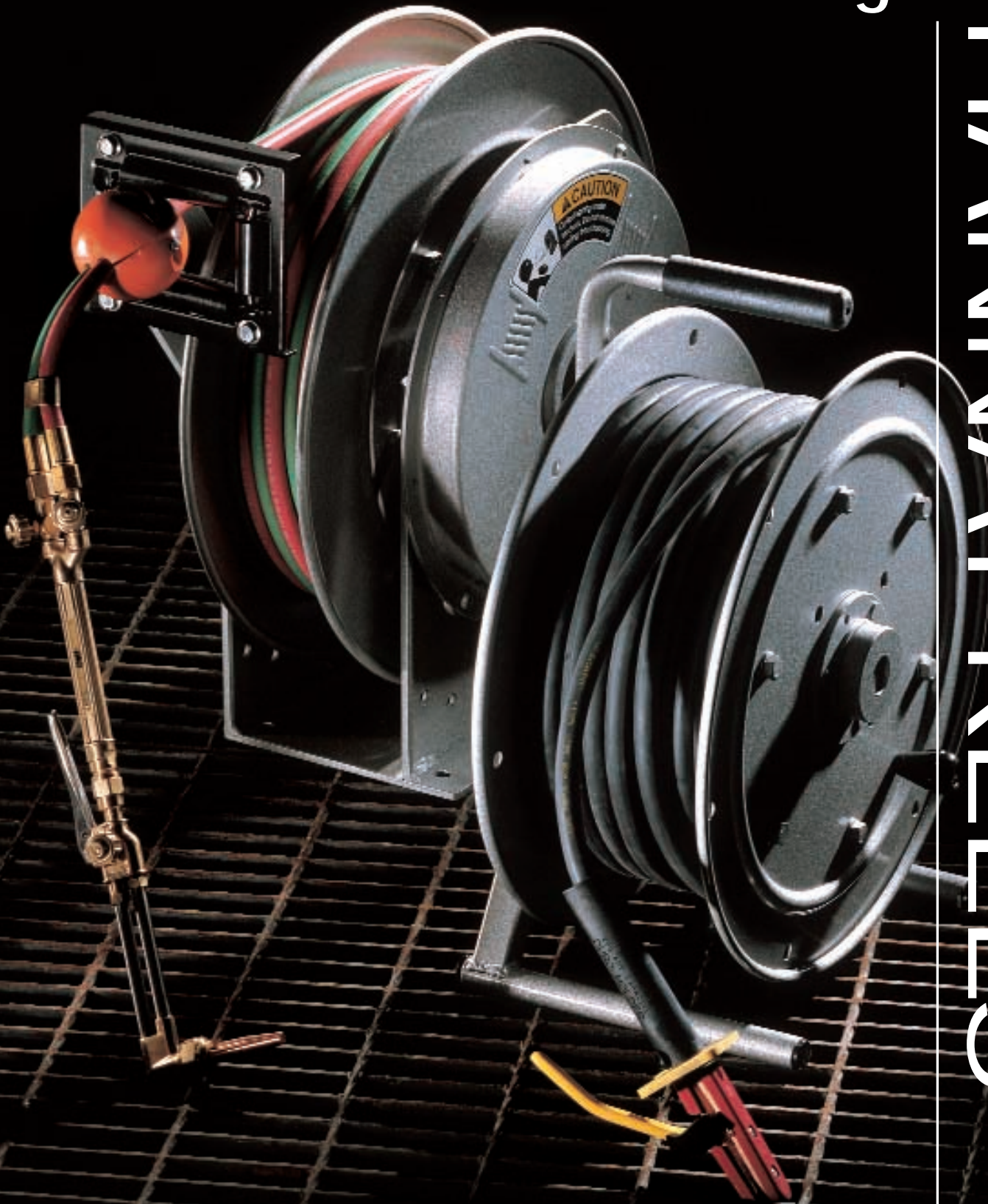


# Welding Reels

# HANNAY REELS



 **Hannay<sup>®</sup>  
Reels**  
*The reel leader.*

For use for:

- Arc Welding
- Gas Welding
- Cutting Operations

H-9422-W  
Rev. 5

## Arc Welding Reels: Power or Manual Rewind To handle cable to 400 amps.

Heavy-duty reels let you pay out the cable you need and rewind easily. Current passes through a 400 amp rated rotary electrical device for instant use with any cable length unwound. Reel is designed for use with single conductor electrode cable or grounding lead. Provision is made for quick connection to your welder.

### Rewind (WCR):

Choose gear driven crank rewind or chain & sprocket drive powered by an electric, hydraulic or compressed air motor. An auxiliary rewind is standard on power rewinds.

### Rewind (SWCR):

A heavy-duty spring motor (SWCR) provides self-contained rewind power. A non sparking ratchet assembly locks the reel when the desired length of cable has been payed out. A pull on the cable unlocks the reel and the spring motor retracts the cable. A declutching arbor is provided to prevent damage from reverse winding.

### Roller:

Series SWCR reels are supplied with a 4-way roller assembly. Roller position must be specified (See Ordering Guide & Accessory Catalog).

### Cable Stop:

A cable stop should be used on Series SWCR to prevent damage to rollers and electrode holders and to permit adjustment of free cable length (See Ordering Guide & Accessory Catalog).

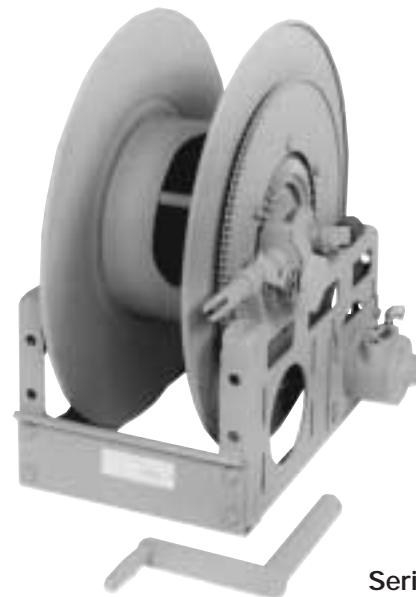
### Brakes and Locks:

Gear driven crank rewind and power rewind reels are supplied with a pinion brake as standard on Series WCR reels.



Series SWCR

Standard Configuration Shown



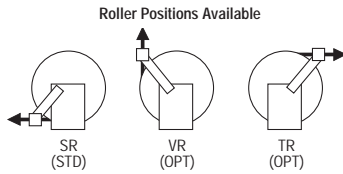
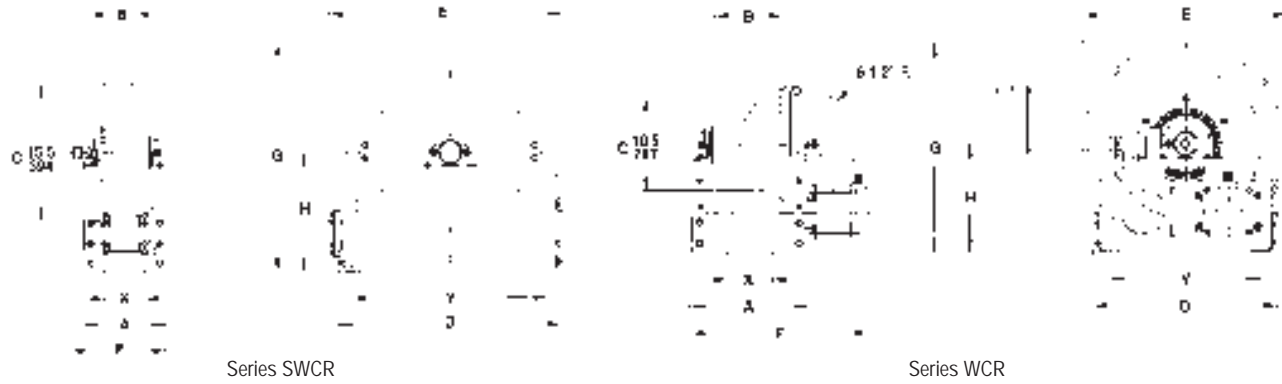
Series WCR  
 (Air Power AWCR)

Standard Configuration Shown



Protective Ground Lug Boot  
 part no. 9955.0202

## Dimensions and capacities



### BE SURE TO CHECK DIMENSIONS AND WEIGHTS PRIOR TO ORDERING.

To receive a detailed parts breakdown drawing for Series SWCR, request ISO 94, for Series WCR, request ISO 188.

Cable Capacity of Reel <u>feet</u> m.		Model Number	Reel Dimensions <u>inches</u> mm.  x, y indicate mounting holes.														Approx. Weight Crank /Spring <u>lb.</u> kg. See Note 2		Roller Assy Supplied on Standard Models
Gauge of Cable #2 #1 1/0 2/0 3/0 4/0		For Power Rewind See Note 3	A	B	D	E	F	F	F	F	F	G	H	X	Y	NET	SHIP		
O.D. (in)	.50 .58 .62 .67 .72 .81		CRANK	ELEC.	AIR	HYD	SPRING												
85	85 60 60 60 40	SWCR716-23-24-15.5G	9.25	3	23.25	24.38	-	-	-	-	11	23.88	12.5	4.5	20.25	85	120	R204	
	25.9 25.9 18.3 18.3 18.3 12.2		235.0	76.2	590.6	619.3	-	-	-	-	279.4	606.6	317.5	114.3	514	39	54		
-	- - - - 60 50	SWCR716-25-26-15.5B	9.25	3	25	26.12	-	-	-	-	11	25.88	13.5	4.5	22	91	126	R204	
-	- - - - 18.3 15.2		235.0	76.2	635.0	663.4	-	-	-	-	279.4	657.4	342.9	114.3	559	41	57		
-	- - 100 - - -	SWCR716-25-26-15.5A	10.25	3	25	26.12	-	-	-	-	12	25.88	13.5	5.5	22	106	141	R205	
-	- - 30 - - -		260.4	76.2	635.0	663.4	-	-	-	-	304.8	657.4	342.9	139.7	559	48	64		
-	275 200 200 150 150	WCR16-19-21	13	7.5	20.5	21.88	15	19.75	17.38	17.62	-	21.5	12.12	5	16.75	71	106	-	
-	83.8 61.0 61.0 45.7 45.7		330.2	190.5	520.7	555.8	381.0	501.7	441.5	447.5	-	546.1	307.8	127	425	32	48		
-	- - - - 300 200	WCR16-23-24	13	7.5	20.5	23	15	19.75	17.38	17.62	-	23.5	12.12	5	16.75	78	113	-	
-	- - - - 91.4 61.0		330.2	190.5	520.7	584.2	381.0	501.7	441.5	447.5	-	596.9	307.8	127	425	35	51		

Specifications subject to change.

#### Notes:

- Upon request, reels can be supplied with drum lengths other than shown and with disc sizes in other diameters.
- Weights shown in chart are for crank or spring rewind models. ADD these amounts for power rewind models: (Series WCR)

	Net (lbs.)	Ship (lbs.)	Net (kg.)	Ship (kg.)
Electric	40	40	15.1	15.1
Hydraulic	20	20	9.1	9.1
Air	20	20	9.1	9.1

- When ordering power rewind Series WCR, prefix model number with:

A = Air Rewind EP = Electric Rewind HD = Hydraulic Rewind  
 (Air rewind reels are supplied with control valve and hose; 12v and 24v DC rewind reels are supplied with switch and solenoid; 115v AC rewind reels are not supplied with switch but can be ordered separately; hydraulic rewind reels are not supplied with control valve.)

### FOR WELDING HOSE AND CABLE SPECIFICATIONS SEE BACK COVER.

# Series TWCRCR

## Dual Arc Welding Reel: Manual Rewind To handle cable to 400 amps.

Hannay's Series TWCRCR reels are manual rewind dual-spool welding cable reels designed to handle grounding and arc welding leads on the same reel unit. Each reel unit includes two spools to hold separate lengths of welding cable.

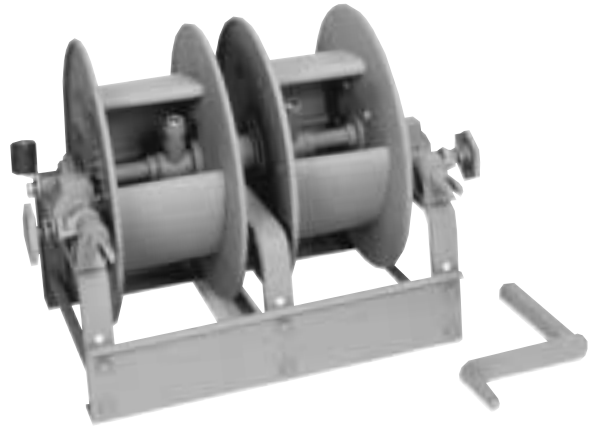
Current passes through a 400 amp rotary electrical device for instant and constant use with any cable length unwound. Long-wearing Delrin bearings provide electrical insulation and lube-free ease of operation.

### Rewind:

Gear driven crank rewind with a removable handle; each spool is rewound independently.

### Brakes and Locks:

A pinion brake is standard on Series TWCRCR.



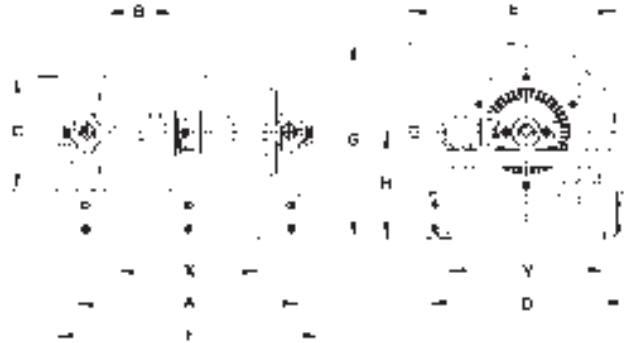
Series TWCRCR

Standard Configuration Shown



Protective Ground Lug Boot  
part no. 9955.0202

### Dimensions and capacities



Series TWCRCR

### BE SURE TO CHECK DIMENSIONS AND WEIGHTS PRIOR TO ORDERING.

To receive a detailed parts breakdown drawing for Series TWCRCR, request ISO 185.

Cable Capacity Per Spool					Model Number	Reel Dimensions										Approx. Weight	
feet m.						inches mm.										lb.	kg.
Gauge of Cable					A	B	C	D	E	F	G	H	X	Y	NET	SHIP	
#1	1/0	2/0	3/0	4/0													
O.D. (in)	.58	.62	.67	.72	.81												
O.D. (mm)	14.7	15.7	17.0	18.3	20.6												
-	50	50	45	40	TWCR12-17-18	16.5	4	10.5	18	20.75	21	18.12	9.88	9	14.25	78	113
-	15.2	15.2	13.7	12.2		419.1	101.6	266.7	457.2	527.0	533.4	460.2	251.0	229	362	35	51
125	100	100	80	50	TWCR14-17-18	20.5	6	10.5	18	20.75	25	18.12	9.88	13	14.25	80	115
38.1	30.5	30.5	24.4	15.2		520.7	152.4	266.7	457.2	527.0	635.0	460.2	251.0	330	362	36	52
150	100	100	60	60	TWCR12-19-20	16.5	4	10.5	18.5	21	21	19.75	10.38	9	14.75	82	117
45.7	30.5	30.5	18.3	18.3		419.1	101.6	266.7	469.9	533.4	533.4	501.7	263.7	229	375	37	53
-	150	150	100	80	TWCR14-19-20	20.5	6	10.5	18.5	21	25	19.75	10.38	13	14.75	84	119
-	45.7	45.7	30.5	24.4		520.7	152.4	266.7	469.9	533.4	635.0	501.7	263.7	330	375	38	54

Specifications subject to change.

### FOR WELDING HOSE AND CABLE SPECIFICATIONS SEE BACK COVER.

## Portable Reel: Manual Rewind To handle cable to 400 amps.

A rugged portable reel with carrying handle and rubber pads. The reel turns on long-wearing Delrin bearings which provide electrical insulation and lube-free ease of operation. The reel is designed for use with single-conductor electrode cable or for grounding lead. A rotary electrical device, rated at 400 amps, permits instantaneous use of the cable with any length unwound. Provision is made for quick connection to your welder. This reel is provided with mounting holes for permanent installation.

### Rewind:

Manual rewind is accomplished by a knob permanently attached to the disc.

### Brakes and Locks:

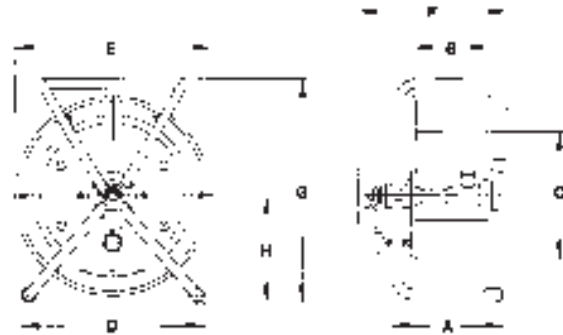
An adjustable friction brake comes standard with this reel.



Model WCR11-17-19

Standard Configuration Shown

### Dimensions and capacities



Model WCR11-17-19



Protective Ground Lug Boot  
part no. 9955.0202

### BE SURE TO CHECK DIMENSIONS AND WEIGHTS PRIOR TO ORDERING.

To receive a detailed parts breakdown drawing for Model WCR11-17-19, request ISO 110.

Cable Capacity of Reel $\frac{\text{feet}}{\text{m.}}$							Model Number	Reel Dimensions $\frac{\text{inches}}{\text{mm.}}$								Approx. Weight $\frac{\text{lb.}}{\text{kg.}}$	
Gauge of Cable								A	B	C	D	E	F	G	H	NET	SHIP
#2	#1	1/0	2/0	3/0	4/0												
O.D. (in)	.50	.58	.62	.67	.72	.81											
O.D. (mm)	12.7	14.7	15.7	17.0	18.3	20.6											
	200	150	100	75	75	50	*WCR11-17-19	9.25	6	10.5	15.5	16.5	13	18.81	8.69	24	34
	61.0	45.7	30.5	22.9	22.9	15.2		235.0	152.4	266.7	394	419.1	330.2	477.8	220.7	11	15

Specifications subject to change.

\*UPS Shippable.

**FOR WELDING HOSE AND CABLE SPECIFICATIONS SEE BACK COVER.**

# Series N400

## Gas Welding Reels: Spring Rewind To handle twin welding hose.

Hannay's Series N400 twin-hose spring rewind reels handle 1/4" and 3/8" oxygen/gas hose in lengths up to 100 feet. Series N400 reels have two swivel joint inlets and two outlet risers to handle twin hose for gas welding.

### Rewind:

A heavy-duty spring motor provides self-contained rewind power. A non sparking ratchet assembly locks the reel when the desired length of hose has been payed out. A pull on the hose unlocks the reel and the spring motor retracts the hose. A declutching arbor is provided to prevent damage from reverse winding.

### Inlets:

Standard inlets are 90° ball bearing swivel joints with 1/2" female NPT threads.

### Outlets:

Standard outlets are male 9/16"-18 threads with right hand threads for oxygen hose and left hand threads for gas hose.

### Operating Pressures & Temperatures:

These reels operate at pressures to 300 psi (21 bar), and at working temperatures from -40° F to +200° F (-40° C to +93° C). The type of gas to be used MUST be indicated when ordering hose (for example, acetylene, propane, M.A.P.P., etc.).

### Rollers:

All models are supplied with a 4-way roller assembly. Roller position must be specified. (See Ordering Guide & Accessory Catalog).

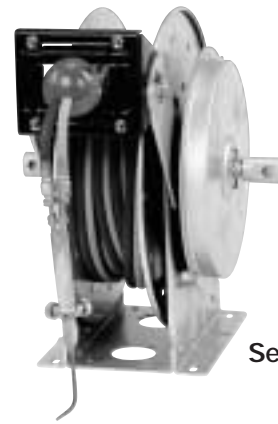
### Hose Stop:

A hose stop is required and is used to prevent damage to rollers and torch and to permit adjustment of free hose length. (See Ordering Guide & Accessory Catalog).

**NOTICE: A FLEXIBLE CONNECTOR MUST BE USED BETWEEN THE INLET PIPE AND THE INLET SWIVEL JOINT.**

### BE SURE TO CHECK DIMENSIONS AND WEIGHTS PRIOR TO ORDERING.

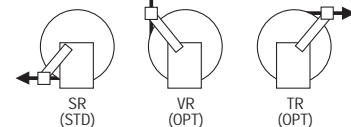
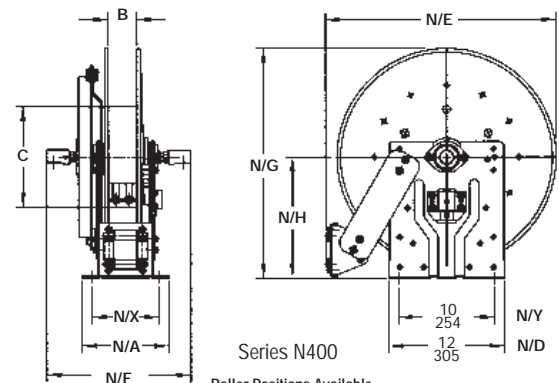
To receive a detailed parts breakdown drawing for Series N400, request ISO 186.



Series N400

Optional TR position Shown

### Dimensions and capacities



Hose Capacity of Reel feet m.		Model Number	Reel Dimensions inches mm. x, y indicate mounting holes.									Approx. Weight lb. kg.		Roller Assy Supplied on Standard Models
I.D. (in)	1/4" 3/8"		N/A	B	C	N/E	N/F	N/G	N/H	N/X	*NET	FRT SHIP WT		
I.D. (mm)	6.4 9.5													
O.D. (in)	.53 .66													
O.D. (mm)	13.5 16.7													
2/35	2/35	*N416-19-20-10.5C	10	4	10.5	20.75	15.12	20	10.62	8	70	85	N204	
2/10.7	2/10.7		254	101.6	266.7	527.1	368.3	508.0	269.7	203.2	32	39		
2/50	2/50	*N416-19-20-8J	10	4	8	20.75	15.12	20	10.62	8	74	90	N204	
2/15.2	2/15.2		254	101.6	203.2	527.1	368.3	508.0	269.7	203.2	34	41		
2/75	2/75	N416-23-24-10.5G	10	4	10.5	23.75	15.12	24	12.62	8	94	109	N204	
2/22.9	2/22.9		254	101.6	266.7	603.3	368.3	609.6	320.5	203.2	43	49		
2/100	2/100	N417-23-24-10.5G	11	5	10.5	23.75	16.12	24	12.62	9	95	113	N205	
2/30.5	2/30.5		279.4	127.0	266.7	603.3	393.7	609.6	320.5	228.6	43	51		

Specifications subject to change.

#### Notes:

1. Reel models and capacities shown are for standard drag applications; for vertical lift applications consult factory.
2. Many other sizes, from standard components, available on request.

\*UPS Shippable = net wt. plus carton wt.

### FOR WELDING HOSE AND CABLE SPECIFICATIONS SEE BACK COVER.

Hannay Reels, Inc. Phone 518-797-3791 Toll Free 1-877-GO REELS (467-3357) FAX 1-800-REELING (733-5464) USA or FAX 518-797-3259 (International)  
www.hannay.com reels@hannay.com



## Hannay will go to any length to provide you with the welding reels you need.

As the leading manufacturer of hose and cable reels, Hannay knows what you need in a hose or cable welding reel. You need reels that are long-lasting. Built to high standards. Reels that require only minimal routine maintenance. Reels that help you get the job done.

### You need Hannay Reels.

Versatile Hannay reels handle cable for arc welding or hose for oxygen/gas, protecting valuable hose and cable while improving efficiency.

All our reels are made to stringent specifications, so you know you're buying reels you can depend on year after year, even under the most demanding conditions. Plus, we make reels for every application and every industry. We have 2700 standard models and if one of these doesn't meet your needs, we'll work with you to design a reel that fits your specific application.

This catalog contains our most popular welding hose and cable reels. For other hose reels, cable reels, or reels for specific applications, just ask and we'll send you the catalog you need. After all, when you deal with the reel leader, it's easier to have a reel choice.

### To order Hannay Reels.

Please refer to our Ordering Guide & Accessory Catalog. For more information on our 2700 standard models of hose and cable reels, please ask about specific product catalogs.

Other Hannay Catalogs available are: Aviation Refueling, Cable, Firefighting, Hose, LP Gas, Lube, Petroleum Delivery, Portable, Spray, Stainless, Triad Rescue, Pressure Wash, Audio Video and Ordering Guide & Accessory Catalog.



Hannay Reels, Inc.  
553 State Route 143  
Westerlo, NY USA 12193-0159  
Telephone 518-797-3791  
Toll Free 1-877-GO REELS (467-3357)  
Fax 1-800-REELING (733-5464) USA  
or  
FAX 1-518-797-3259 (International)  
www.hannay.com  
email: reels@hannay.com

BMP 10M 6/02

## Welding Hose & Cable Specifications.

### Welding Hose

Our oxygen/acetylene grade R hose assemblies with inside diameters of 1/4" and 3/8" have working pressures of 200 psi (14 bar), working temperatures of -40° F to +200° F (-40° C to +93° C), and have an EPDM core and cover with one textile braid reinforcement. This hose is designed for oxygen/acetylene only. Grade T oxygen/acetylene, propane, M.A.P.P. hose is also available.

**For hose assembly details and pricing, consult your Hannay dealer or factory.**

### Welding and Grounding Cable

Wire Size (AWG)	Area (Per Conductor)	
	Circ. Mils	Sq. mm
#2	66,500	33.7
#1	84,000	42.6
#1/0	105,600	53.5
#2/0	133,100	67.4
#3/0	167,800	85.0
#4/0	211,600	107.2

**For cable pricing consult factory.**



*Hannay's rugged, versatile arc and gas welding reels make both shop and mobile installations more efficient and productive.*

Available from:

H-9422-W  
Rev. 5